

RR3-389-PAR16

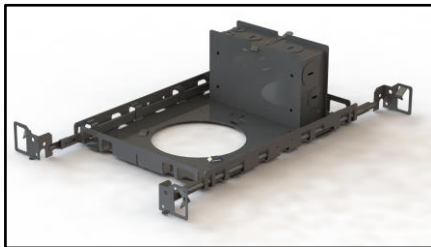
Installation Instructions (New Construction) (LED)

CLARTÉTM
LIGHTING

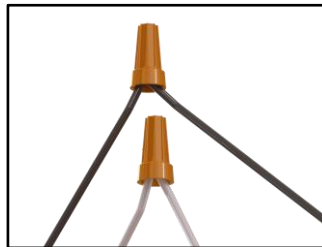
CAUTION! READ AND FOLLOW ALL SAFETY AND INSTALLATION INSTRUCTIONS CAREFULLY. TURN OFF ELECTRICAL POWER BEFORE STARTING INSTALLATION.

WARNING - Before starting installation, disconnect power by turning off the circuit breaker or by removing the appropriate fuse at the fuse box. Do not install any luminaire assembly closer than 6" from any curtain or similar combustible materials. Risk of fire or electric shock. Luminaire wiring and electrical parts may be damaged when drilling for installation of LED retrofit kit. Check for enclosed wiring and components. Risk of fire or electric shock. LED Retrofit Kit installation requires knowledge of luminaires electrical systems. If not qualified, do not attempt installation. Contact a qualified electrician. Risk of fire or electric shock. Install this kit only in luminaires that have the construction features and dimensions shown in the photographs and/or drawings and where the input rating of the retrofit kit does not exceed the input rating of the luminaire. To prevent wiring damage or abrasion, do not expose wiring to edges of sheet metal or other sharp objects. Do not make or alter any open holes in an enclosure of wiring or electrical components during kit installation. **Consult a qualified electrician before installing. Work should be performed by qualified personnel.**

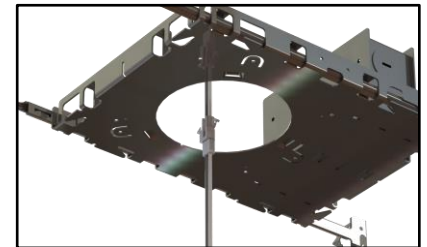
SAVE THESE INSTRUCTIONS



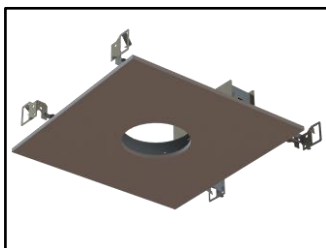
1. Install Recessed Clarté Box Frame by Inserting two hanger bars into wood framing or T-Bar drop down ceiling.



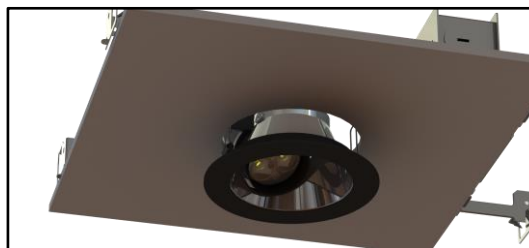
2. Connect line to line, neutral to neutral.



3. Pull whip through the hole and connect the Molex connectors together.



4. Cut drywall 4.125" in diameter to clear the fixture.



5. Push fixture through the hole with the spring clips up to hold the fixture up.



6. Restore power and check the operation of your new light fixture.