

# RR6-615-RET-BRG-PAR30

## Installation Instructions (Retrofit) (Bridge)(ON/OFF)

# CLARTÉ™

## LIGHTING

### CAUTION!

READ AND FOLLOW ALL SAFETY AND INSTALLATION INSTRUCTIONS CAREFULLY. TURN OFF ELECTRICAL POWER BEFORE STARTING INSTALLATION.

### IMPORTANT SAFEGUARDS:

*Suitable* to Install on “*Dimming Circuits*”.

*All wiring must be in accordance with all applicable NEC Standards*

SAVE THESE INSTRUCTIONS

**WARNING** - Before starting installation, disconnect power by turning off the circuit breaker or by removing the appropriate fuse at the fuse box. Do not install any luminaire assembly closer than 6" from any curtain or similar combustible materials. Risk of fire or electric shock. Luminaire wiring and electrical parts may be damaged when drilling for installation of LED retrofit kit. Check for enclosed wiring and components. Risk of fire or electric shock. LED Retrofit Kit installation requires knowledge of luminaires electrical systems. If not qualified, do not attempt installation. Contact a qualified electrician. Risk of fire or electric shock. Install this kit only in luminaires that have the construction features and dimensions shown in the photographs and/or drawings and where the input rating of the retrofit kit does not exceed the input rating of the luminaire. To prevent wiring damage or abrasion, do not expose wiring to edges of sheet metal or other sharp objects. Do not make or alter any open holes in an enclosure of wiring or electrical components during kit installation. **Consult a qualified electrician before installing. Work should be performed by qualified personnel.**

THE RETROFIT ASSEMBLY IS ACCEPTED AS A COMPONENT OF A LUMINAIRE WHERE THE SUITABILITY OF THE COMBINATION SHALL BE DETERMINED BY UL OR AUTHORITIES HAVING JURISDICTION.



1. Remove existing reflector assembly. Grasp lip of reflector, turn counterclockwise while pulling down.



2. Remove (3) adjustment screws on can at ceiling line. Then remove can and flex conduit.

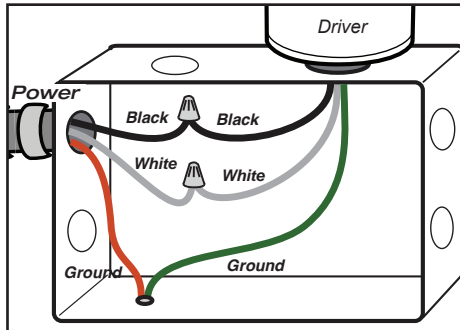


3. Feed Transformer into ceiling opening. Attach ballast assembly through 1/2" K.O. on top of J-Box.

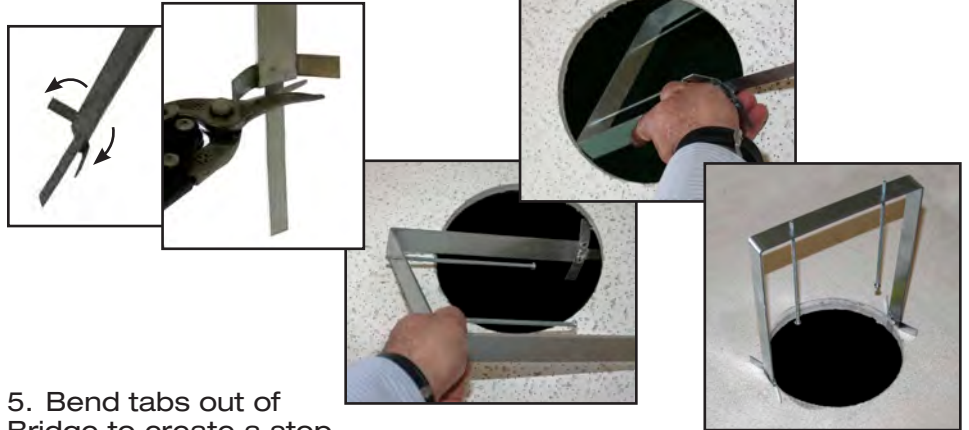
# RR6-615-RET-BRG-PAR30

Installation Instructions (Retrofit) (Bridge)(ON/OFF)

## Wiring Diagram



4. Connect Driver Black wire to Power Black wire. Connect Driver white wire to Power white wire. Connect Driver ground wire to Power ground wire.



5. Bend tabs out of Bridge to create a stop. Cut vertical tab less than the ceiling thickness.

6. Place the mounting bridge/socket bracket inside the ceiling and secure each leg to the fixture frame opening.



7. Connect LED pigtail with Transformer pigtail.



8. Insert LED fixture into opening and align Bridge screws into reflector holes and turn clockwise



9. Tighten screws to secure LED fixture to ceiling opening.



10. Restore electrical power and check the operation of your new **CLARTÉ** Light Fixture.