

SDT-837-LSI-PAR20

Vertical Round 16 or 18W Low Mount Track Fixture
LSI Track Installation Instructions

CLARTÉTM

LIGHTING

CAUTION!

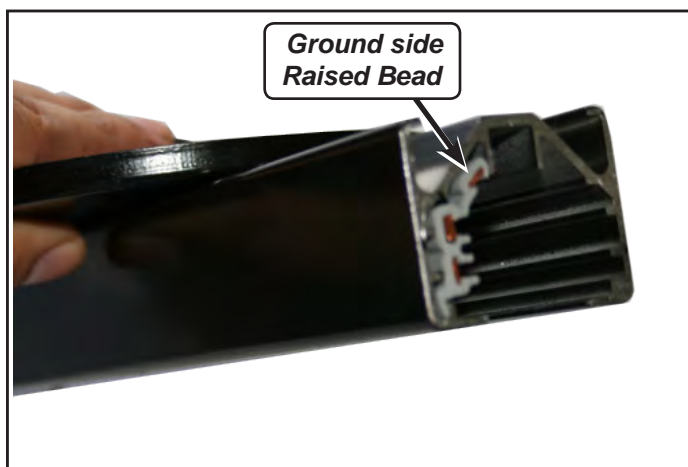
READ AND FOLLOW ALL SAFETY AND INSTALLATION INSTRUCTIONS CAREFULLY.
TURN OFF ELECTRICAL POWER BEFORE STARTING INSTALLATION.

WARNING

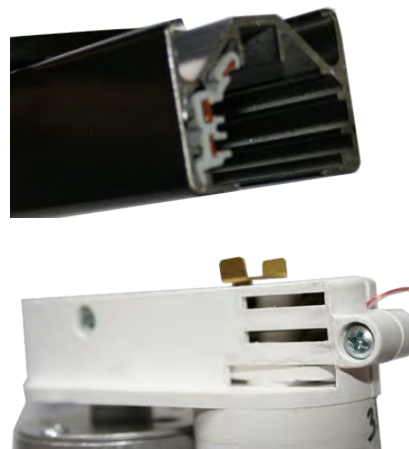
- Before starting installation, disconnect power by turning off the circuit breaker or by removing the appropriate fuse at the fuse box. Do not install any luminaire assembly closer than 6" from any curtain or similar combustible materials. Risk of fire or electric shock. Luminaire wiring and electrical parts may be damaged when drilling for installation of LED retrofit kit. Check for enclosed wiring and components. Risk of fire or electric shock. LED Retrofit Kit installation requires knowledge of luminaires electrical systems. If not qualified, do not attempt installation. Contact a qualified electrician. Risk of fire or electric shock. Install this kit only in luminaires that have the construction features and dimensions shown in the photographs and/or drawings and where the input rating of the retrofit kit does not exceed the input rating of the luminaire. To prevent wiring damage or abrasion, do not expose wiring to edges of sheet metal or other sharp objects. Do not make or alter any open holes in an enclosure of wiring or electrical components during kit installation. **Consult a qualified electrician before installing. Work should be performed by qualified personnel.**

SAVE THESE INSTRUCTIONS

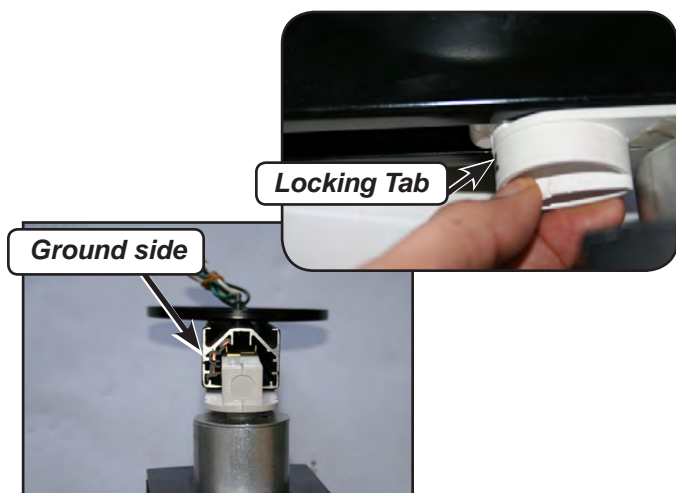
To reduce risk of fire and electric shock use only with **Lighting Services Inc** Track systems.



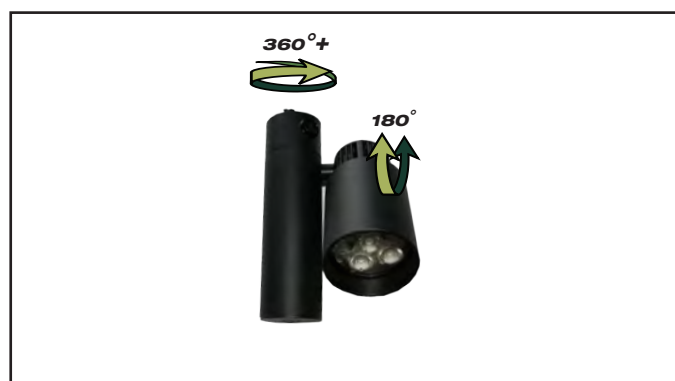
1. IMPORTANT: Determine the ground side of track. Can only be assembled if grounds are aligned.



2. Line up **Track Head** with track and **insert**.



3. Then turn **Track Knob** a 1/4 turn Clockwise while pushing up.



4. Adjust the angle of reflector to the desired position. Restore electricity and check the operation of your new **CLARTÉ** light fixture.

To remove, allow track head to cool, Pull down while turning track knob 1/4 turn Counter Clockwise.