

SDT-836-PAR8-PND Trimless Installation Instructions

CLARTÉ™ LIGHTING

CAUTION!

READ AND FOLLOW ALL SAFETY AND INSTALLATION INSTRUCTIONS CAREFULLY. TURN OFF ELECTRICAL POWER BEFORE STARTING INSTALLATION.

WARNING - Before starting installation, disconnect power by turning off the circuit breaker or by removing the appropriate fuse at the fuse box. Do not install any luminaire assembly closer than 6" from any curtain or similar combustible materials. Risk of fire or electric shock. Luminaire wiring and electrical parts may be damaged when drilling for installation of LED retrofit kit. Check for enclosed wiring and components. Risk of fire or electric shock. LED Retrofit Kit installation requires knowledge of luminaires electrical systems. If not qualified, do not attempt installation. Contact a qualified electrician. Risk of fire or electric shock. Install this kit only in luminaires that have the construction features and dimensions shown in the photographs and/or drawings and where the input rating of the retrofit kit does not exceed the input rating of the luminaire. To prevent wiring damage or abrasion, do not expose wiring to edges of sheet metal or other sharp objects. Do not make or alter any open holes in an enclosure of wiring or electrical components during kit installation. **Consult a qualified electrician before installing. Work should be performed by qualified personnel.**

Wiring may differ depending on fixture style.

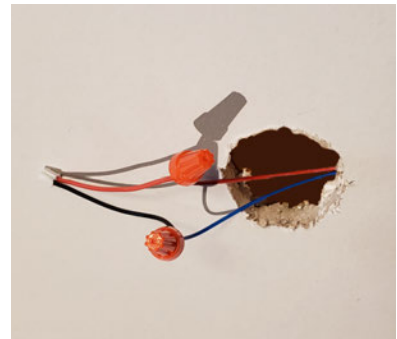
SAVE THESE INSTRUCTIONS



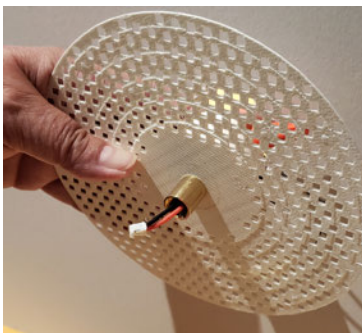
1. Score a 1 $\frac{7}{8}$ " (1.875") hole in the drywall.



2. Cut out the hole.



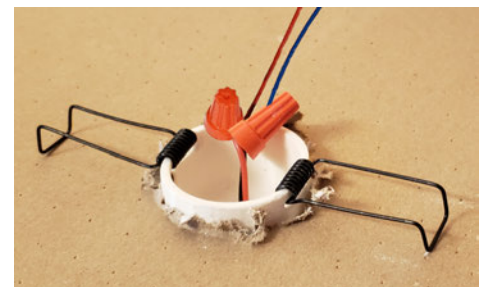
3. Cap wires from the driver to the open end of female connector (provided).



4. Pull female connector through coupling.



5. Fold back spring clips and push into the hole.



(View from back of drywall)

SDT-836-PAR8-PND Trimless ***Installation Instructions***



6. (Optional) Wrap coupling and female end of wire with tape to protect from spackle.



7. Apply a layer of spackle and allow to dry completely. Reapply layers as necessary.



8. Sand until smooth or apply desired texture.



9. Paint the ceiling then remove the tape.



10. Connect male end of wire from the back of the fixture to the female end sticking out of the coupler.