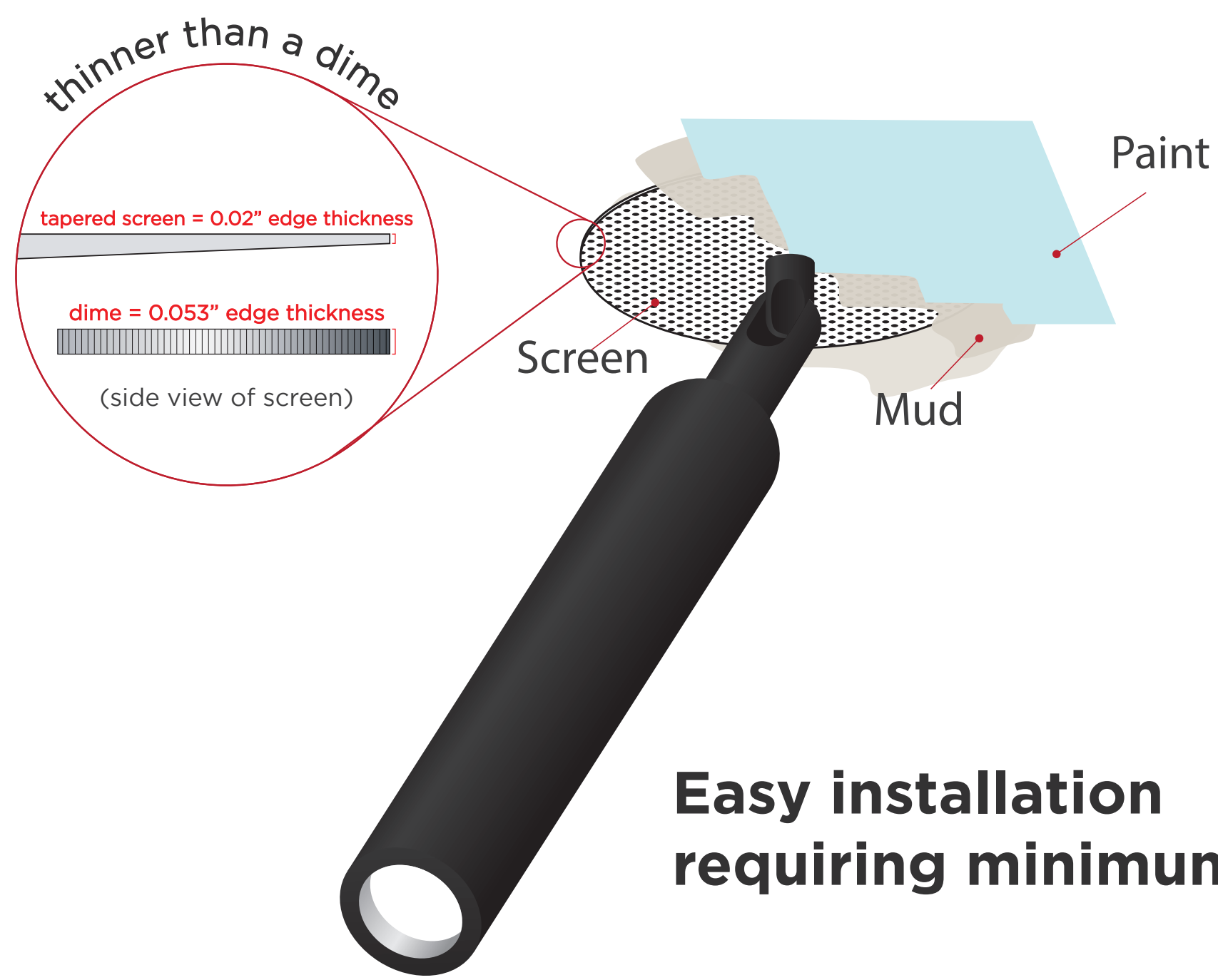




Surface Mono Point Level Plane and Trimless



Trimless Fixed

PAR8 Scale



PAR16 Scale



PAR20 Scale



PAR30 Scale



PAR38 Scale



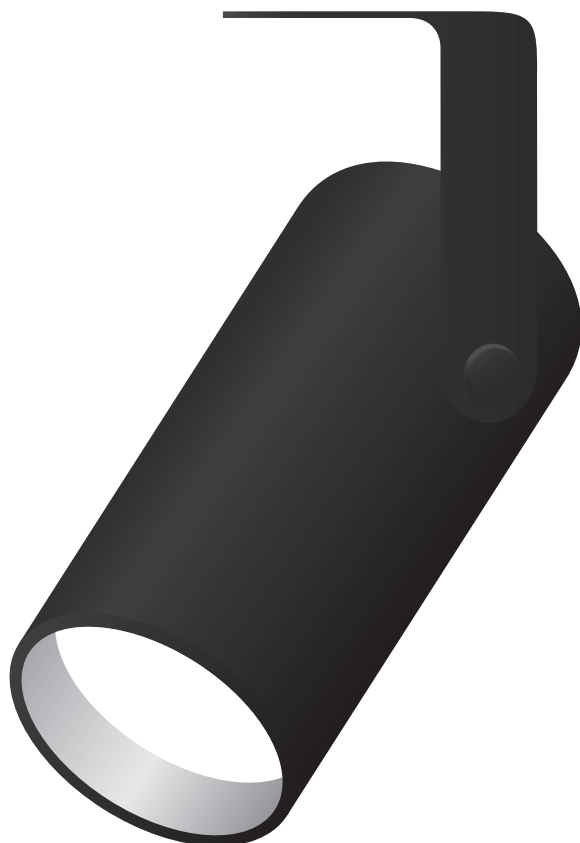
**Clarté Lighting Optics Float Off the Ceiling With
a Small Single 5/8" Connection Through the Drywall**

Trimless Adjustable

PAR8 Scale



PAR16 Scale



PAR20 Scale



PAR30 Scale



PAR38 Scale



6" STEM

12" STEM

18" STEM

Standard stems are 5/8" thick and are available in 6", 12", & 18". Custom sizes up to 8ft!

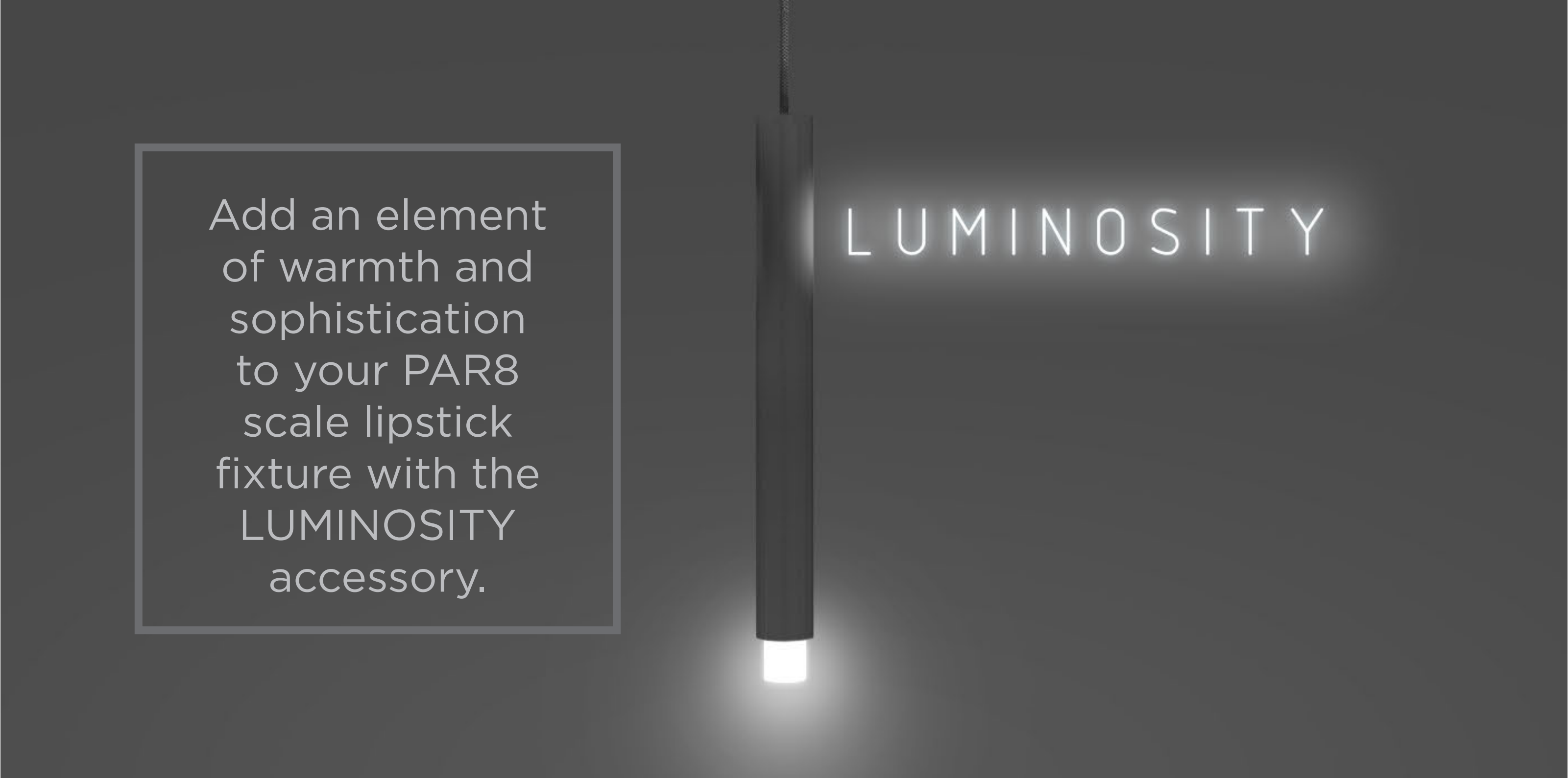
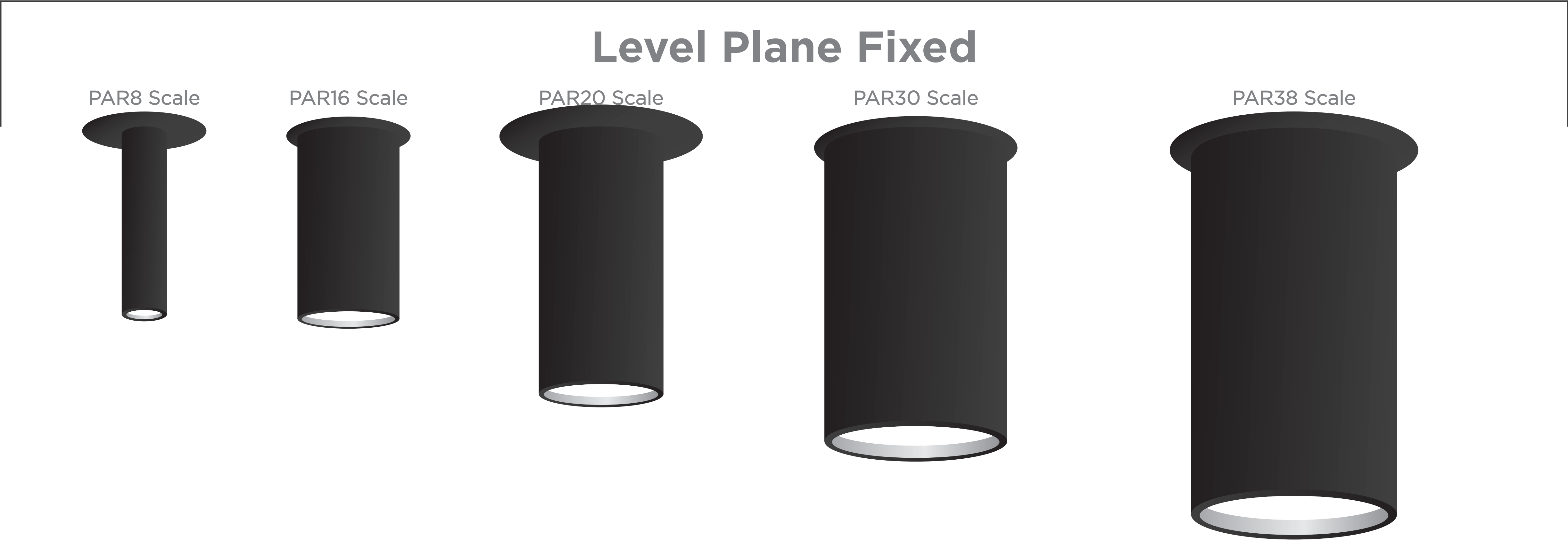
INTENTIONALLY

Different

- **3300+ Color Finish Choices**
- **3 Mechanical Adaptations**
- **8 Optical Accessories**
- **12 LED Chromaticities**
- **5 Fixture Families**
- **4 Beam Spreads**
- **5 Optical Sizes**

Petersen Automotive Museum - Los Angeles

Our Level Plane Mono Point Fixture Features a Canopy Plate That Recesses Flush to the Drywall



What are the advantages of Clarté's 3D printed screen?

Level Plane and Trimless

1 - Precision

Being able to 3D print parts creates more exact and consistent dimensions from part to part and reduces lead time to secure a part and go into fixture production. Unlike metal, we can 3D print designs with consistency, ensuring a uniform for your installation.

2 - Made in-house



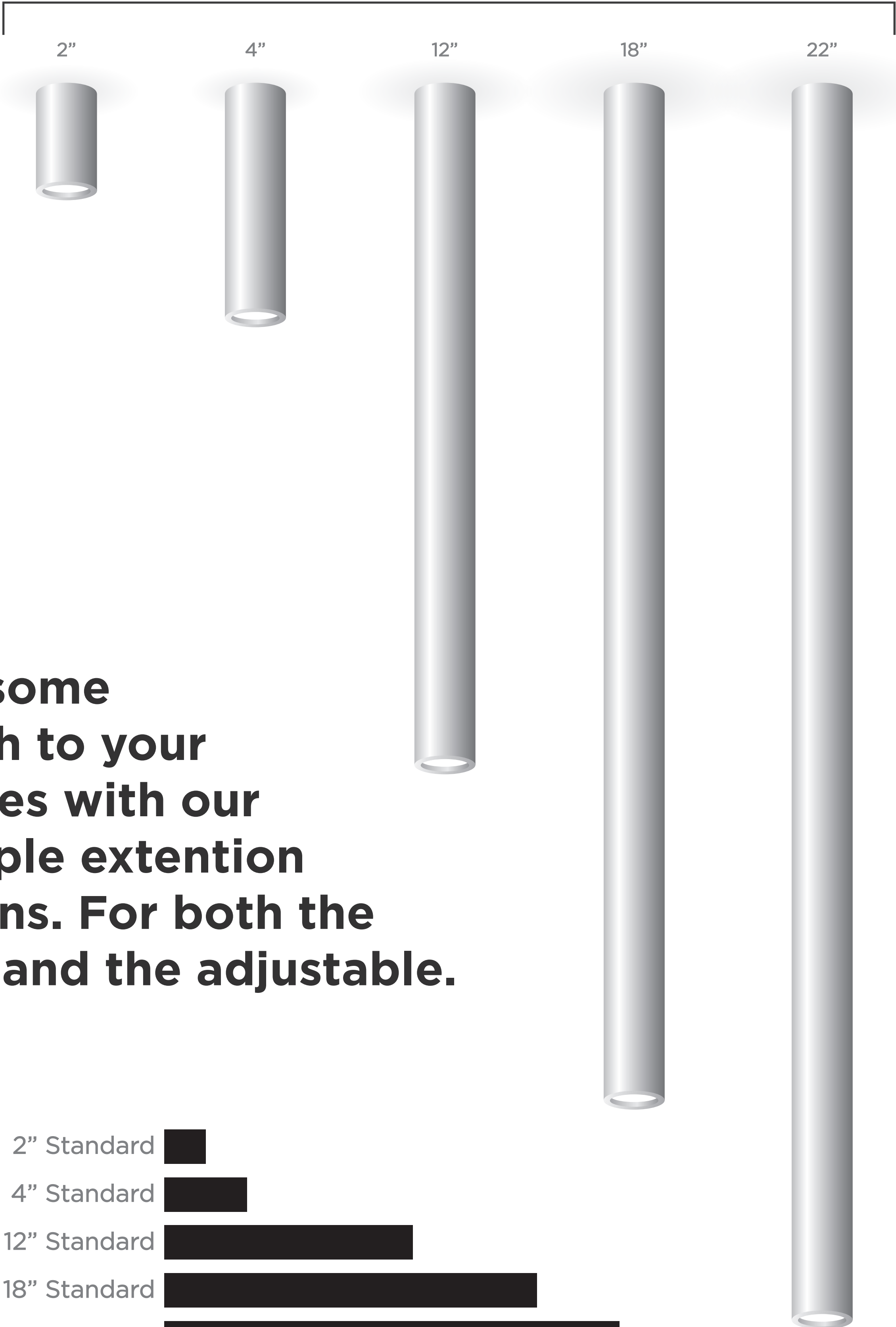
We're proud to say that all our products are made in the USA. Clarté Lighting designs and manufactures 100% of our product offering from our production studio in Covina, CA.

3 - Ultra thin edge

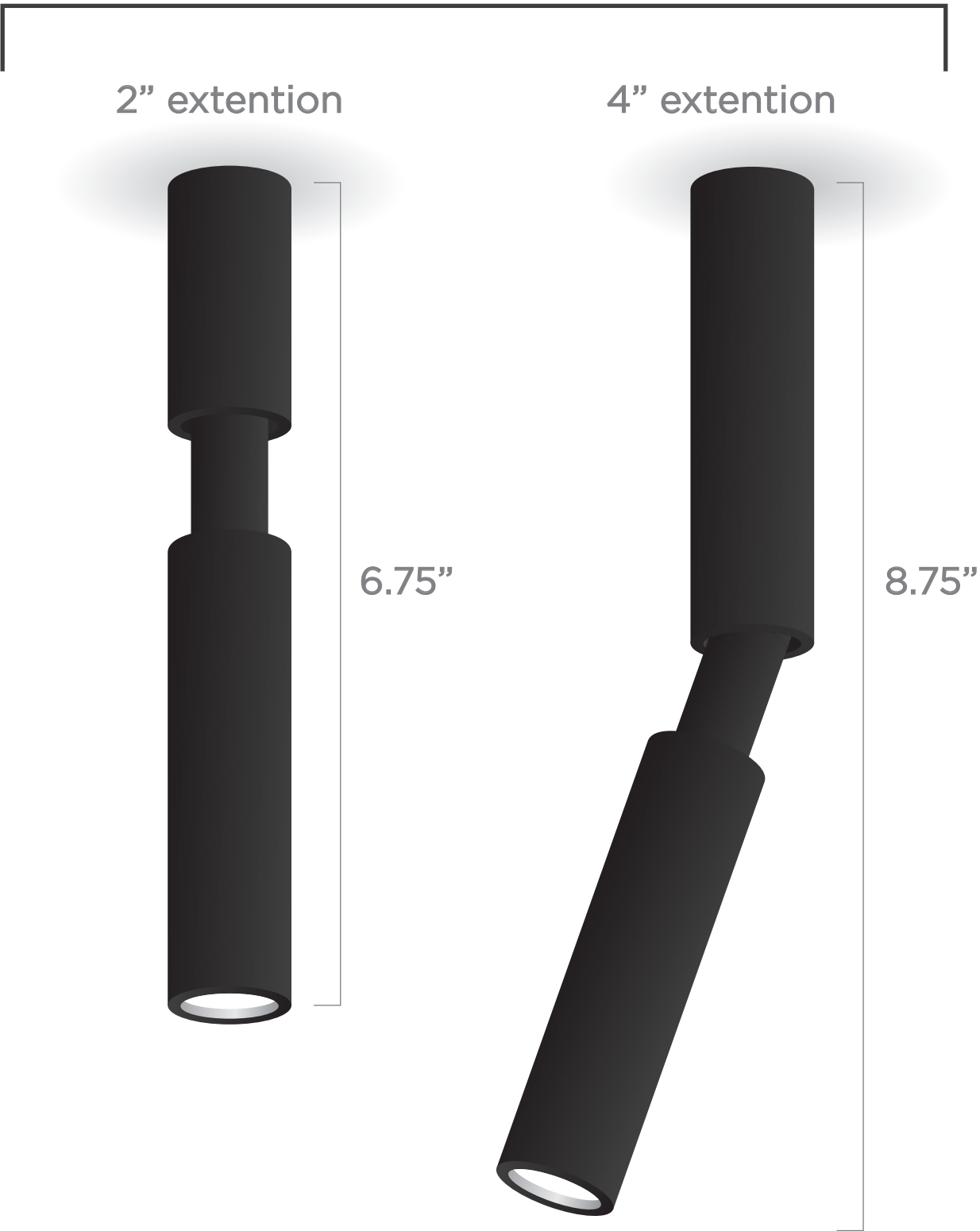
Make your fixture installation blend seamlessly into the ceiling using our new Surface Screen. Designed to be easily installed, the screen tapers from 0.062" in the center down to 0.02" on the edge.

PAR8 Scale Extension Options

FIXED



ADJUSTABLE



Add some length to your fixtures with our multiple extension options. For both the fixed and the adjustable.

Integrate and Brand a Themed Space with Some Color

