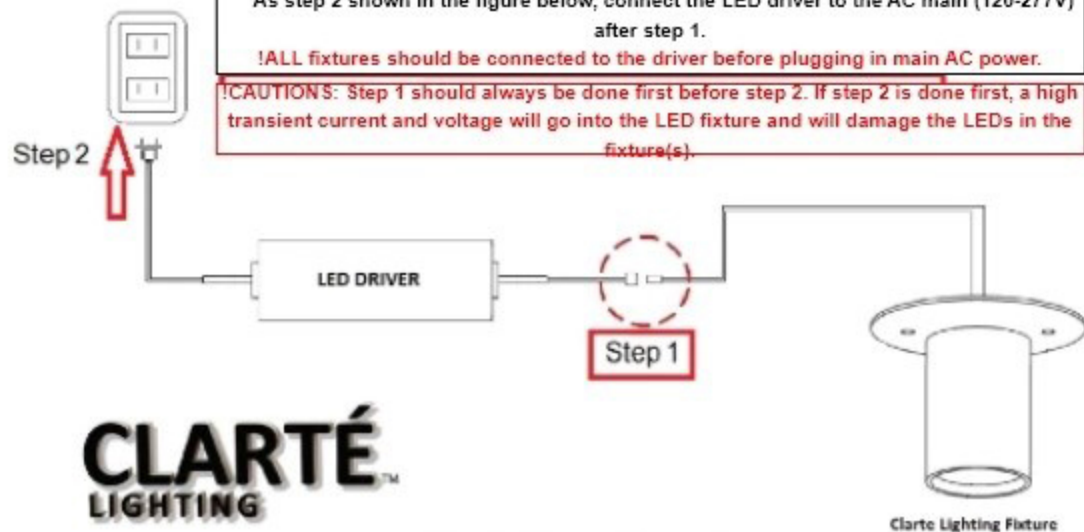


IMPORTANT!! PLEASE READ BEFORE INSTALLATION

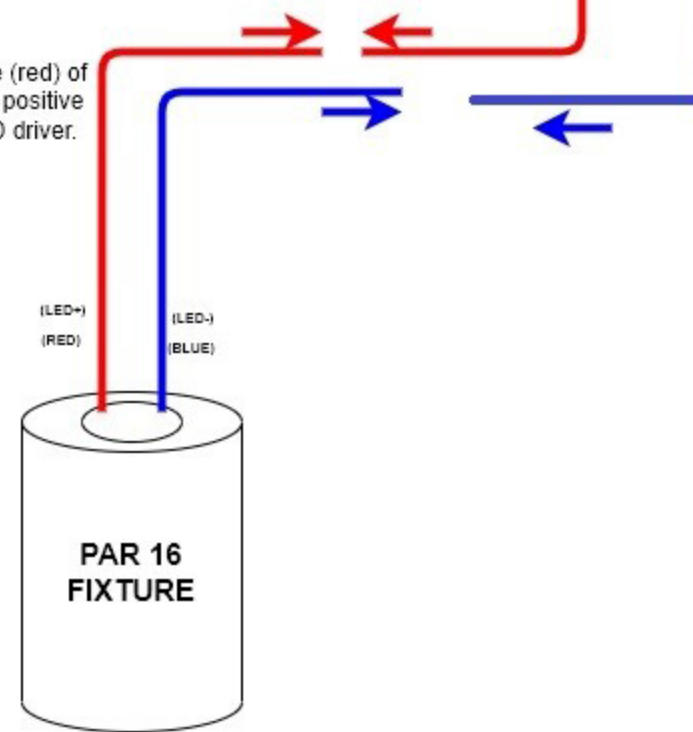
As step 1 shown in the figure below, connect Clarte fixture(s) to the LED Driver first.
As step 2 shown in the figure below, connect the LED driver to the AC main (120-277V) after step 1.

!ALL fixtures should be connected to the driver before plugging in main AC power.

!CAUTIONS: Step 1 should always be done first before step 2. If step 2 is done first, a high transient current and voltage will go into the LED fixture and will damage the LEDs in the fixture(s).



Connect positive wire (red) of the first fixture to the positive wire (red) of the LED driver.



CLARTÉ
LIGHTING