

SMS3-668-PAR30

6" Surface Mounted Fixture (Electronic ON/OFF or 0-10V 1% dimming)
MOUNTING Instructions



CAUTION!

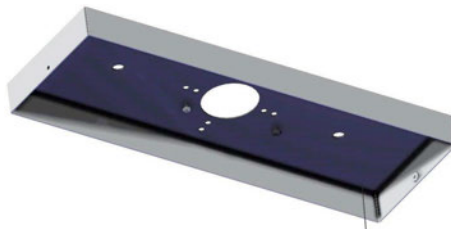
READ AND FOLLOW ALL SAFETY AND INSTALLATION INSTRUCTIONS CAREFULLY. TURN OFF ELECTRICAL POWER BEFORE STARTING INSTALLATION.

WARNING - Before starting installation, disconnect power by turning off the circuit breaker or by removing the appropriate fuse at the fuse box. Do not install any luminaire assembly closer than 6" from any curtain or similar combustible materials. Risk of fire or electric shock. Luminaire wiring and electrical parts may be damaged when drilling for installation of LED retrofit kit. Check for enclosed wiring and components. Risk of fire or electric shock. LED Retrofit Kit installation requires knowledge of luminaires electrical systems. If not qualified, do not attempt installation. Contact a qualified electrician. Risk of fire or electric shock. Install this kit only in luminaires that have the construction features and dimensions shown in the photographs and/or drawings and where the input rating of the retrofit kit does not exceed the input rating of the luminaire. To prevent wiring damage or abrasion, do not expose wiring to edges of sheet metal or other sharp objects. Do not make or alter any open holes in an enclosure of wiring or electrical components during kit installation. **Consult a qualified electrician before installing. Work should be performed by qualified personnel.**

SAVE THESE INSTRUCTIONS



1. Install standard j-box. Make wire connections. Black with black, white with white and ground with ground.



2. Install mounting plate using the two screws provided onto J-Box (J-Box by provided by G.C.)



Three drivers inside housing. 1 screw on each side to secure lid.



Safety cable keep plates securely attached.

4. Align mounting plate to ballast housing.



5. Secure mounting plate to ballast housing using provided screws.



6. Re-energized power circuit and enjoy your new Clarté fixture.

* After installation, restore power and check the operation of your new lighting fixture.